



The Training Courses

The programme consists of six training courses in different locations in Europe:

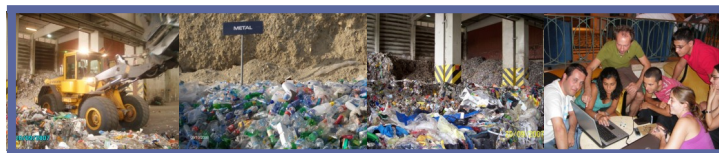
- **TC 1 17th - 21st September 2007**
[Aachen, Germany]
Substance cycle waste management I
- **TC 2 10th - 14th March 2008**
[Aachen, Germany]
Substance cycle waste management II
- **TC 3 16th - 20th June 2008**
[Dresden, Germany]
Environmental impacts
- **TC 4 06th - 10th October 2008**
[St. Julians, Malta]
Secondary raw materials
- **TC 5 10th - 16th May 2009**
[Linz, Austria]
Biogas, energy supply
- **TC 6 14th - 17th September 2009**
[Mallorca, Spain]
Human producers of waste and decision-maker for recycling systems

International and multi-disciplinary by its nature, each training course lasts five days with several technical visits per course, providing an excellent mixture of theory and practice. All interested researchers who wish to take part are invited to visit the web site for more information on the programme and registration. Places on these courses are limited, so early registration is recommended.



The Background

WISE offers an integrated programme of training courses in sustainable waste management and is a European Commission MARIE CURIE Series of the Events, Contract No. MSCF-CT-2006-045669. It was developed by the Department of Processing and Recycling (I.A.R.) of the RWTH Aachen University in co-operation with an extensive network of supporting universities and experts. The programme starts in January 2007 and ends in January 2010.



Contact us!

For questions and remarks please contact the WISE Secretariat:

I.A.R.
RWTHAACHEN

Department of Processing and Recycling
RWTH Aachen University

Phone: +49 241 80 95 715
Fax: +49 241 80 92 232
E-mail: wise@rwth-aachen.de
Web: www.wise.rwth-aachen.de



*Smart is not enough –
go for **WISE** !*



**Waste
in
Social
Environment**

Interdisciplinary
Training Courses
for young Researchers

**RWTHAACHEN
UNIVERSITY**



The Concept

WISE offers an integrated programme of training courses in sustainable waste management to facilitate contact between top university young researchers of the mixed nationality and disciplines and the leading professionals from around the world in order to explore advanced waste management strategies and techniques.

During the first phase of the programme, the basics of waste management and key technologies, as well as innovative European solutions will be in focus. The second phase will involve work with case studies in order to apply the knowledge obtained during the first phase to real life scenarios. The third phase will examine examples of integrated waste management facilities which are the most advanced in their fields.



It Goals

The aim of each course is to give an opportunity to young researchers who wish to work in the waste management field to understand the complexity and inter-related nature of complex problems through a multi-disciplinary approach.

The programme offers comprehensive training to widen the horizons of the researchers and give direct access to top academics and industrialists, encouraging closer contact and collaboration in research and in the field.



The Topics

- Natural resources management
- Energy supply
- EU legal regulations
- Cost-benefit analysis
- Social impact
- Local strategies implementation
- System efficiency
- Multi-disciplinary approach
- Ect.



How can you join WISE?



Young researchers working on their PhD thesis and post-docs can apply via the online registration form. Not only researchers working on waste management related topics, but also those having background in economics, industrial psychology or technology development are encouraged to apply. Selection of the final participants will be made by the scientific steering committee.

What is provided for the WISE participants?



Course materials, reading lists, accommodation, food, drinks are provided free of charge to all participants. Travel funding is available for eligible students.

For detailed information contact us or visit our homepage

www.wise.rwth-aachen.de